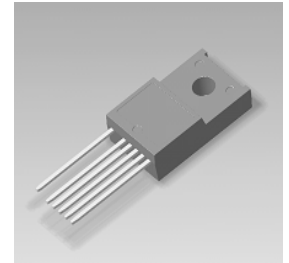


STR-W6200D Series

Power IC for PWM Type Switching Power Supply with Low Noise and Low Standby Power

■ General Descriptions

The STR-W6200D series products are power ICs for switching power supplies, incorporating a power MOSFET and a current-mode type PWM controller IC. The low standby power is accomplished by the automatic switching between the PWM operation in normal operation and the burst-oscillation under light load condition. The product achieves high cost-performance power supply systems with few external components.



TO-220F-6

■ Features

- Current-Mode Type PWM Control
- PWM with Jittering Function
The function reduces the EMI noise and enables simplified (low-cost) EMI filters.
The jittering period is adjustable by an external capacitor.
- Auto-Standby Function
The burst-oscillation enables the low standby power.
Input Power $P_{IN} < 100\text{mW}$ at no load
- Built-in Startup Circuit, enabling low power consumption
- Overcurrent Protection (OCP) with Built-in Input Compensation Circuit
The function has less AC input voltage dependency.
- Overload Protection (OLP) with Built-in Delay Timer (the delay time is adjustable by an external capacitor)
- External Latch Protection (ELP)
The function enables the latch shutdown by external signal.
- Bias-Assist Function, reducing operating V_{CC} voltage drop
The function improves the startup operation and makes a low V_{CC} capacitor applicable.
- Leading Edge Blanking Function
- Slope Compensation Function
- Built-in Avalanche Energy Guaranteed High-Voltage Power MOSFET
- Various Protections
 - Overcurrent Protection (OCP)----- Pulse-by-Pulse
 - Overload Protection (OLP) ----- Auto-Restart
 - Overvoltage Protection (OVP) ----- Latch Shutdown
 - Thermal Shutdown Protection (TSD) ----- Latch Shutdown

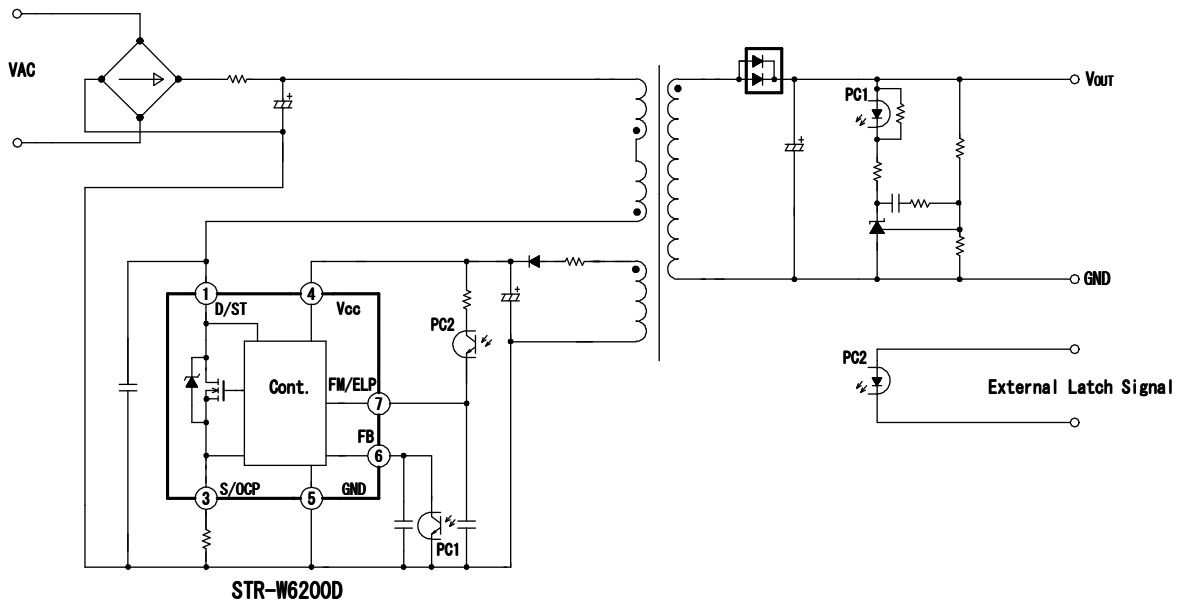
■ Applications

Switching Power Supplies for
Home Appliances (White Goods), Digital Consumer Equipment, OA Equipment, Industry Machines,
Communication Devices, Others

■ Product Lineup

Product No.	f_{OSC} (kHz)	MOSFET V_{DSS} (MIN) (V)	$R_{DS(ON)}$ (MAX) (Ω)
STR-W6251D	67	650	3.95
STR-W6252D	67	650	2.8
STR-W6253D	67	650	1.9

■ Typical Application Circuit

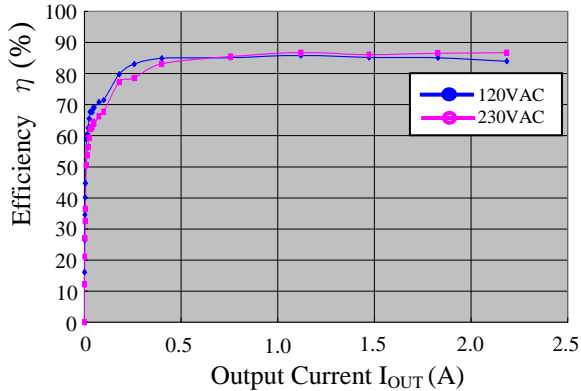


■ Typical Electrical Characteristics

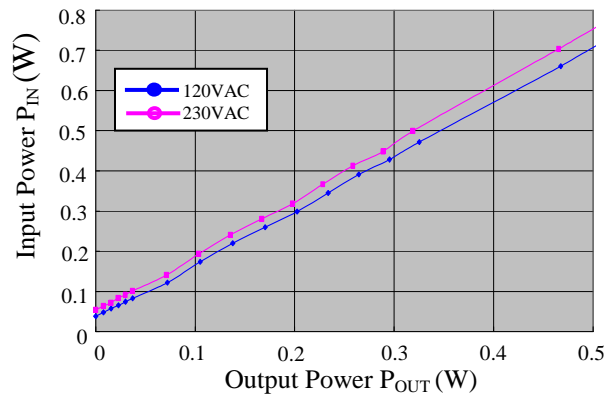
STR-W6251D Power Supply Characteristics

Input: 85 - 264VAC, P_{OUT} : 10W (5V/2A)

Efficiency η — Output Current I_{OUT}



Input Power P_{IN} — Output Power P_{OUT}



Warning

- The contents in this document are subject to changes, for improvement and other purposes, without notice. Make sure that this is the latest version of the document before use.
- The operation and circuit examples in this document are provided for reference purposes only. Sanken assumes no liability for violation of industrial property, intellectual property, or other rights of Sanken or third parties, that stem from these examples.
- The user must take responsibility for considering and determining which objects the products in this document are used with.
- Although Sanken will continue to improve the quality and reliability of its products, semiconductor products, by their nature, have certain fault and failure rates. The user must take responsibility for designing and checking to secure the device and system so that a part failure may not lead to human injury, fire, damages, or other losses.
- The contents in this document must not be transcribed or copied without Sanken's written consent.